

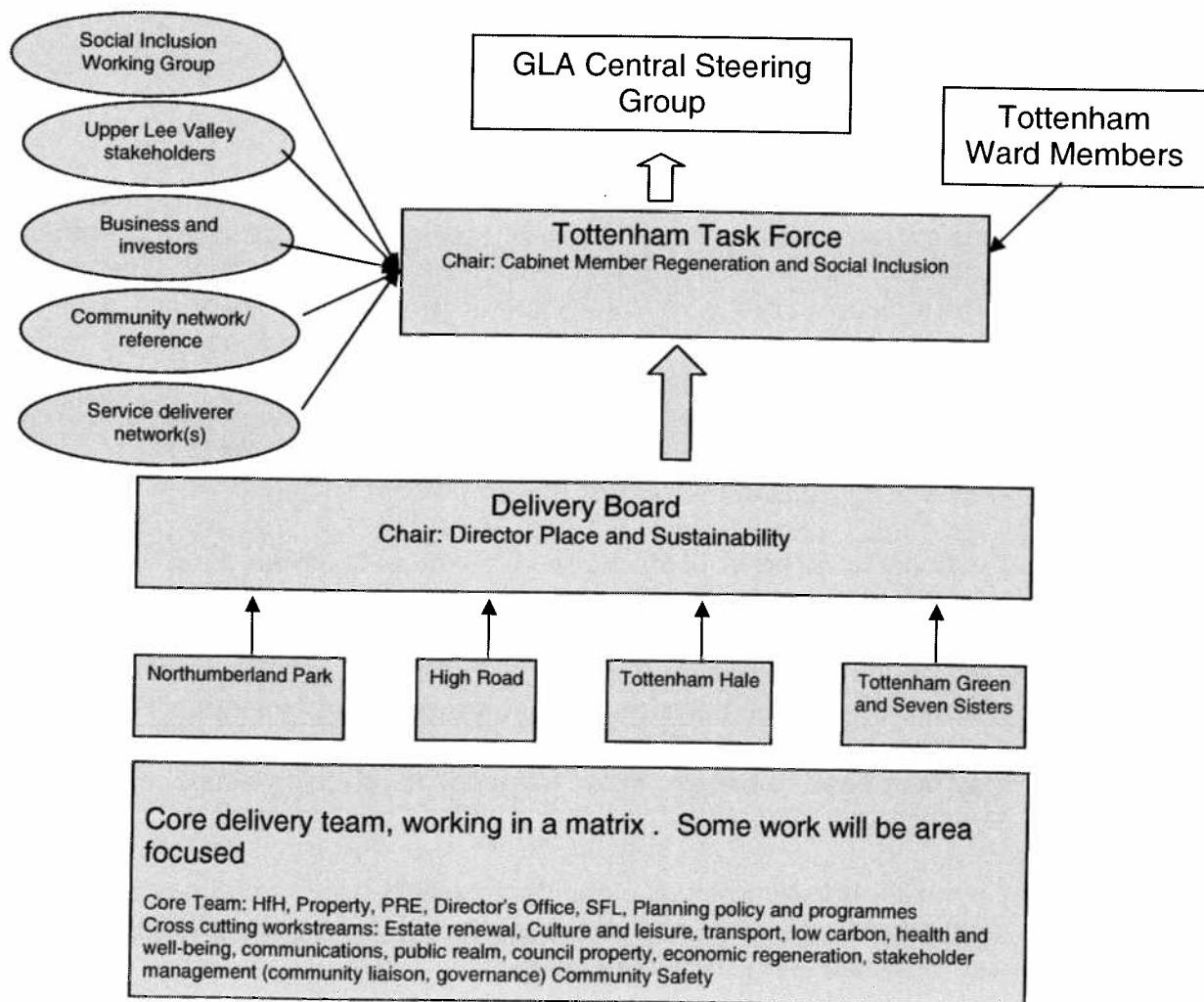
Appendix 1.

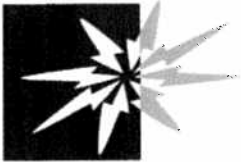
REBUILDING AND REGENERATING TOTTENHAM- GOVERNANCE

Tottenham Task Force

This paper sets out proposals for a governance framework to structure oversight and delivery of regeneration work in Tottenham. It is likely that the framework will require refinement as the context evolves, and it is proposed that there is a six month review period.

1. Overview





Haringey Council

2. GLA Central Steering Group

Chaired by Sir Peter Rogers, Mayoral Advisor, and involving senior business champion(s), this body will make decisions on programme funding, agree delivery plans and oversee the programme management of recovery programmes in the boroughs of Enfield, Haringey and Croydon. These processes will be supported by a central team of officers led by Fiona Fletcher Smith, including planning, TfL and HCA support as well as GLA economic policy and capital project teams.

Sir Stuart Lipton has been appointed by the Mayor to be the Champion advisor for Tottenham and will therefore, be a member of Tottenham's Task Force

The GLA Executive Director of Development and Environment will sit on the Tottenham Task Force and feed back to the GLA Central Steering Group. There will be dedicated officers from the GLA to support the delivery of programmes in Tottenham.

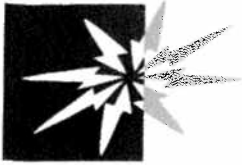
3. Task Force

A great deal of thought has been given to the make up of this group. It is considered that there is a need for a focal point that can draw together a range of national and local expertise to inform the development and delivery of the Regeneration Strategy for Tottenham. It would be an impossible task to try and have a representative from all groups/interests that will contribute to the rebuilding of Tottenham. Rather the Task Force will be a small strategic core group that can move regeneration forward, bringing in additional experts to provide support on specific topics and actively engaging with a wide range of stakeholders through a number of reference groups.

It is considered appropriate for the Council to chair the group in view of the important Community Leadership role.

It is important to draw on the wealth of experience and expertise that Sir Stuart Lipton brings to the borough, very ably supported by 2 specialists in Buildings and also Construction. This will result in external challenge to the group. There may be a need to bring in other "experts" for specific issues, such as developing social policy.

Councillor Vanier provides significant expertise in Community Safety, in depth local knowledge and many connections with local communities. The local MP also provides a key local dimension.



Haringey Council

The College is a key stakeholder in the area and Paul Head brings direct experience of working with young people and a useful perspective on skills, and employment issues.

Business representation can be provided through the Chair of the Haringey Business Board, who provides both a local business voice and is a senior manager at a national company.

The Leader and the Chief Executive of the Council will be ex-officio members of the Task Force.

The Task Force will not be part of the Council's formal decision making but will link in through the Chair to Cabinet.

3.1 Proposed Membership:

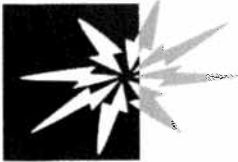
- Chair: Cabinet member for Regeneration (Cllr Strickland)
- Sir Stuart Lipton Mayor's Advisor for Tottenham
- Expert Support Deputy Chair Design Council – Paul Finch
- Expert Support –Chief Construction Adviser to Government- Paul Morrell
- Community Safety Cabinet Member and local Councillor (Cllr Vanier)
- GLA representative: Executive Director of Development and Environment
- The College of Haringey, Enfield and North East London (Paul Head)
- Chair of Haringey Business Board (Andrew Campling)
- David Lammy MP
- Director of Place and Sustainability (Lyn Garner)
- Project Director Tottenham (Anne Lippitt)

Ex-officio Members

- Leader of Haringey Council (Cllr Claire Kober)
- Chief Executive – Haringey Council (Kevin Crompton)

3.2 Key Tasks

1. Oversee the preparation of the Tottenham Regeneration Strategy.
2. Hold the Delivery Board to account in the delivery of coherent and coordinated physical and cross cutting social and economic programmes set out in the Action Plans of the Regeneration Strategy, ensuring outcomes are achieved.
3. Oversee the implementation of the Mayor's Funding programmes for Tottenham including the Outer London Fund.
4. Take responsibility to ensure meaningful engagement with local residents and businesses and to be accountable to stakeholder groups.
5. Drawn down on high level expertise to inform the development of the Strategy and its implementation.
6. Promote and champion the area.



4. Delivery Board

This will be a group overseeing delivery of physical area programmes and cross-cutting social and economic programmes. Ensuring coherence and coordination across all work; resolving issues and risks escalated, accountable for resource allocation and lead on seeking resources to ensure the viability of projects. This will meet fortnightly and be accountable to the Task Force and Cabinet.

4.1 Membership:

- Director of Place and Sustainability, Lyn Garner (chair)
- Project Director, Anne Lippitt
- AD Planning, Regeneration and Economy, Marc Dorfman
- Head of Finance, Place and Sustainability, Matthew Gaynor
- Tottenham Regeneration Team Principal Officers, Adam Hunt, John Norman, Patrick Jones
- Team Leader Housing Design and Major Projects-, Michael Kelleher
- Tottenham Projects Consultant, Terry Knibbs
- Chief Housing Officer Phil Harris
- Team Leader Planning, Environment and Transport, Sule Nisancioglu
- Head of Carbon Management and Sustainability, Nick Powell
- Property Programme Manager, Abdul Qureshi
- Transportation Planner, Maurice Richards
- Economic Development Manager- Martin Tucker
- Head of Director's Office Place and Sustainability, Kate Dalzell
- Homes for Haringey, Deputy Director Property Management, Peter Maddison /Head of New Business Lis Rodrigues
- Communication specialist
- Others- as and when required

Agendas/Minutes to be sent to the following with attendance on an as and when required basis

- Principal Legal Officer- Allan Ledden
- Community Safety officer- Claire Kowalska
- Deputy Director Education- Jan Doust
- Director of Public Health or her representative



5. Community Reference

Getting this right will be crucial. There needs to be a 2 way communication flow with Ward members enabling them to help shape proposals. This will involve establishing a regular meeting with the Tottenham members and Cabinet member(Chair of Task Force), and Project Director. Also regular E mail updates will be a useful form of communication.

The Community links will take a variety of forms. The Area Forums will also be part of the community involvement format. Other meetings will take place with established resident and community groups. Initially the Community Panel will be an important reference and the public meetings/workshops. We will also draw on HAVCOs networks. Through the Education service a group involving the Tottenham Head Teachers will be established. Additionally it will be important to go out and meet with traditionally hard to engage communities.

6. Business and Investor reference

This will draw from current business networks to inform our strategy. This will include Tottenham Traders.

7. Service Delivery Network

It will be important to ensure that those delivering services (public, private, community or voluntary sector) are informed about regeneration plans and have opportunity to engage in development and delivery of strategy.

These will include deliverers of services such as children's centres, schools, larger community centres, libraries, leisure centres, citizen's advice. (There may be cross-over with the business reference group, especially in relation to employment and skills.)

This is likely to be largely a virtual network, focused on providing information and communication online with a wide network. Thematic work undertaken as deemed appropriate by Task Force/ network members/ in accordance with regeneration objectives.

